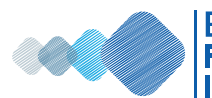


NATIONAL DEBATE ON ELECTORAL REFORMS IN NORTH MACEDONIA



Deliberative Polling is a unique form of political consultation that combines techniques of public opinion research and public deliberation to reveal what public opinion would be on a particular issue if citizens were given a chance to become more informed. The Deliberative Poll seeks to account for the preferences and opinions of citizens both before and after they have had an opportunity to arrive at considerate judgments based on balanced information and discussion with fellow citizens.



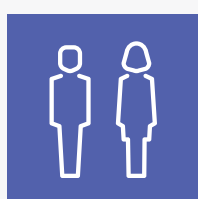
EPI with the support of the Center for Deliberative Polling at the University of Stanford, USA, implemented the deliberative polling event for the third time.

Results



1000
surveyed

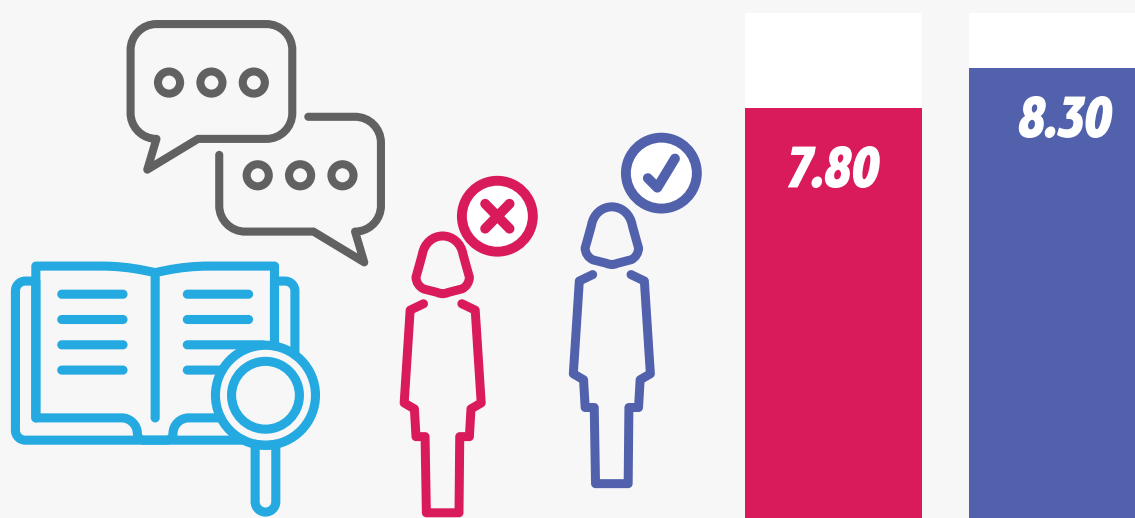
before the
deliberative
polling event



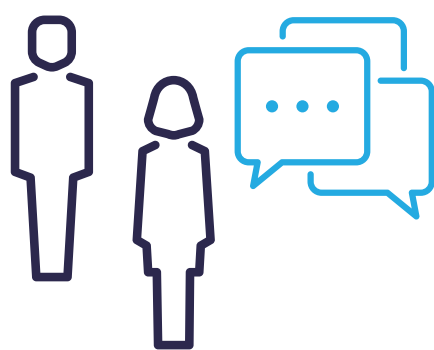
129
surveyed

after the
deliberative
polling event

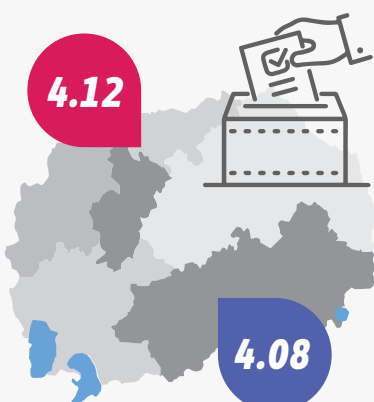
1. ON A SCALE OF 0 TO 10, DO YOU THINK THAT A WIDER INVOLVEMENT OF THE PUBLIC IN THE DIALOGUE ABOUT ELECTORAL REFORMS IS NEEDED?



2. ON ANOTHER SCALE FROM 0 TO 10, WHERE 0 IS COMPLETELY DISAGREE AND 10 IS COMPLETELY AGREE, WHAT IS YOUR ATTITUDE TOWARDS THE FOLLOWING STATEMENTS?



WITH SIX ELECTORAL DISTRICTS, THE MINORITIES ARE AT RISK OF NOT BEING REPRESENTED IN THE PARLIAMENT



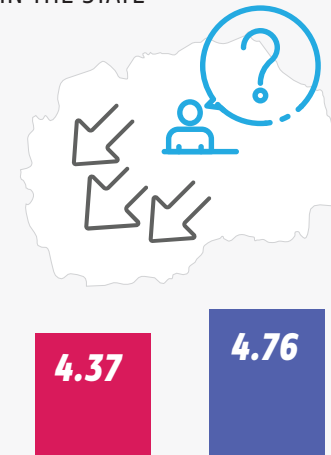
WITH ONE ELECTORAL DISTRICT, THE SMALLER PARTIES WOULD HAVE A BETTER CHANCE OF GETTING MPS IN THE PARLIAMENT



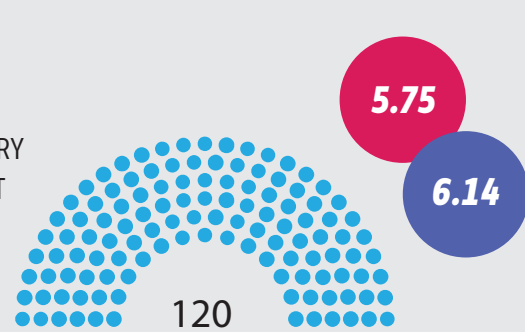
ONE ELECTORAL DISTRICT WILL RESULT IN LESS POLARIZATION OF THE POLITICAL CULTURE BETWEEN THE LARGEST PARTIES IN THE COUNTRY



ONE ELECTORAL UNIT WILL RESULT IN A DISPROPORTIONATE DIVISION OF PARLIAMENTARY SEATS IN RELATION TO THE ETHNIC COMMUNITIES IN THE STATE



ACCORDING TO THE CURRENT ELECTORAL SYSTEM OF NORTH MACEDONIA, THE NUMBER OF PARLIAMENTARY SEATS IN EACH ELECTORAL UNIT IS NOT PROPORTIONAL TO THE NUMBER OF RESIDENTS IN THE ELECTORAL UNITS



3. IS THERE AND WHAT IS THE MANDATORY PERCENTAGE OF REPRESENTATION OF WOMEN ON THE LISTS OF CANDIDATES IN THE PARLIAMENTARY ELECTIONS IN NORTH MACEDONIA?



SIGNIFICANT DIFFERENCES APPEAR BEFORE AND AFTER THE DEBATE REGARDING THE REPRESENTATION OF THE CANDIDATE LISTS. 27.9% OF THE PARTICIPANTS WERE INFORMED THAT THE MANDATORY PERCENTAGE OF REPRESENTATION OF WOMEN IN THE LISTS OF CANDIDATES IS 40%.

